

SKU: SMA AM1

Airway Management Simulator + Ventilation Control

*SmartMan - Because Airway Management is So Much More
Than Only Placing An Advanced Airway*

**NON-INVASIVE AIRWAY
SKILLS
INVASIVE AIRWAY
SKILLS
WITH VENTILATION SKILLS**

**VISUAL LANDMARKS
REALISTIC RESPONSE
REAL TIME FEEDBACK
IMMEDIATE DATA**



Ideal simulator to thoroughly learn airway management

Placement and Technique

Anatomically Correct Landmarks

Immediate Real Time Feedback for Precision

Timing to Establish a Patent Airway

Feedback on Cuff Placement and Leakage

Switch to Intubation During Procedure

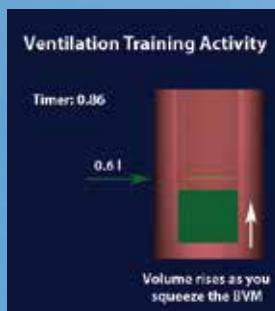
Activities for Ventilations Mastery

Perfect Your Control of Normal Rate of Breathing

Practice Reduced Volume During Respiratory Distress

*Timing to switch from non-invasive to place of
advanced airway device*

*Control Volume and Rate While
Changing on the Fly*



16155 Sierra Lakes Parkway
Suite 160210, Fontana, CA USA 92336
Tel: +1 877 774-4323

SmartMan
MORE SURVIVORS

www.SmartMan.biz

SKU: SMA AM1


Note

For nasopharyngeal airway, tongue edema, and more features see AM2


ONLY ON SMARTMAN AIRWAY MANAGEMENT

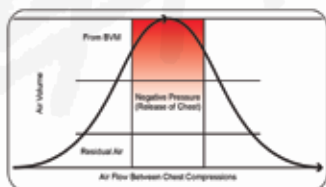
Real Time Feedback for When Timing and Accurate Precise Control of ventilations are needed


CAN YOU ...?

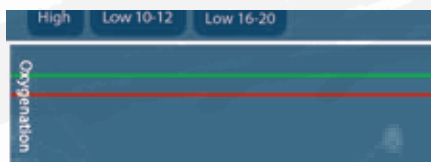
 ... Switch from NIV to Invasive Airway on the fly? How long does it take you?




 ... Properly Provide for Release of Peak Pressure?



 ... Reduce Pressure to the Capillaries by Switching to a Lower Volume Ventilation for a Patient in Respiratory Arrest



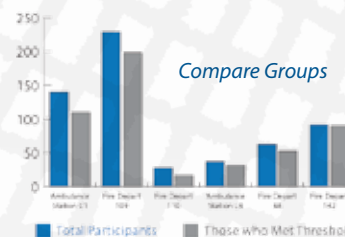
 ... Seamlessly Control the Inhalation and Exhalation?

OBJECTIVE AIRWAY MANAGEMENT DATA AT YOUR FINGER TIPS

- ... Objective Evidence that Skills have been Mastered
- ... Examine Group Performance and Change Over Time
- ... Show Individuals are Consistently Achieving the Target Level



Individuals' Performances at a Glance



Compare Groups Over Time

For NP capability see SMT AM2

BASIC, INTERMEDIATE, ADVANCED AIR & AIRWAY MANAGEMENT

NON-INVASIVE AND INVASIVE SKILLS PRACTICE AS WELL AS REAL LIFE VENTILATING ACTIVITIES WITH REAL TIME FEEDBACK

NON-INVASIVE / INVASIVE

For improving use of the BVM and correct delivery of positive pressure ventilations. Physical and digital feedback as you practice.

Also designed for learning correct placing of an ET Tube and other Extraglottic Airway Devices. It provides the correct physical landmarks and gives immediate accurate digital feedback.

Also includes the basics of proper techniques by requiring head tilt-chin lift, physical and digital feedback to learn to avoid insufflation, verifying placement.

WITH THORAX

- Life-Like Feel of Interactive Air Movement
- Natural Chest Resistance for Inhalation & Exhalation
- Required for Placing of Tube on when Chest moving
- Realistic Pressure Gradient for Air Movement

PHYSICAL LIKENESS

Excellent Physical Look and Feel:
Mouth; Teeth; Tongue; Pharynx; Larynx; Epiglottis; Vocal Cords; Trachea; Esophagus, Esophageal Sphincter; Lungs

ACCURATE DATA

- Accurate Reporting of Information on "Patient Crucial Parameters" Allows for Evidence Based Debriefing.
 - Also Allows For Self Assessment and Self-Improvement During A Training Session
 - Immediate Create a Report for Student/Instructor or Print Later

UNIQUE ADVANCED SKILLS ALL WITH REAL TIME FEEDBACK

- Switch on the fly from non-invasive airway procedures to invasive airway in order to maintain optimal patent
- Timing to Successfully Place an Advance Airway and Assess Leakage
- Feedback to Perfect Maintaining Low Volume Delivery will Varying the Rate
- Control Volume and Rate Delivery for When Low Volume Ventilating is Required.
- Visualization to Prevent Excessive Peak Pressure
- Natural Increasing Resistance As Volume Increases

REAL TIME FEEDBACK

- Accurate Digital Feedback on Rate of Air Flow, Volume, Tidal Flow, Interval, Time to Place Advanced Airway
- Timing for Placement of ET Tube When Performed as a Practice By Itself or When Performed in Transition from Non-Invasive Airway Procedures.
- Full Volume and Low Volume Training As Well As Verification of Whether the Cuff is Leaking, timing Between Ventilations
- Training to Properly Release the BVM
- Display and Recording of Accurate Volume
- Display and Recording of Accurate Rate of Air Flow