

Add-on to any 301 product

The Ultimate Service for Understanding Your Training Progress
 Easy to Understand Benchmarks, Objective Metrics, Attainment of Thresholds

APPROPRIATE TO YOU

CUSTOMIZED

TIME SAVING

FROM ALL SITES

GRAPHIC DISPLAY

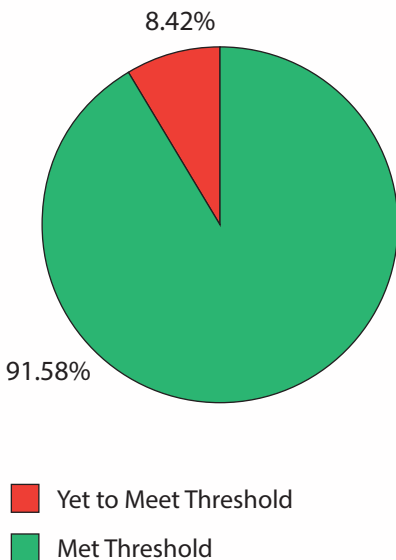
TABULAR



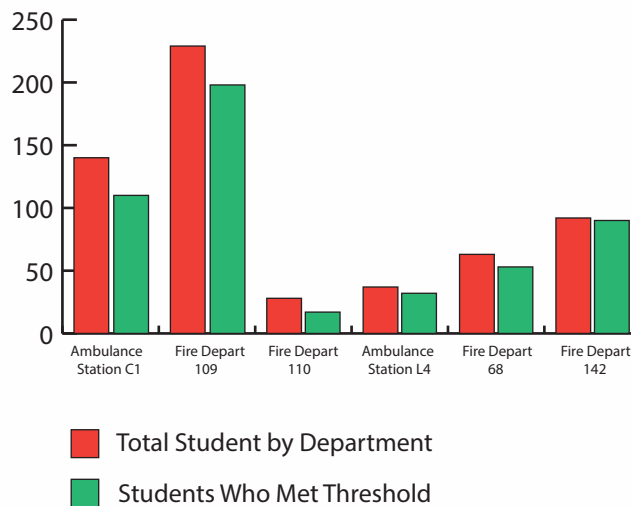
ANSWERS YOUR QUESTIONS

Where is improvement needed?
 Is your training making a difference?
 Are Your Outcomes Improving?

System Overview



Compare Each Department



Click Selectors
 Immediate Response

Select Locations

- Ambulance Station C1
- Fire Depart 109
- Fire Depart 110
- Ambulance Station L4
- Fire Depart 68
- Fire Depart 142

Select Skills

- Compressions 100 Practice
- CPR 30:2 Practice
- CPR 30:2 Test
- Rescue Breaths
- CPR Low Volume Protocol
- Megacode Code

Big Data – Made Meaningful

DASHBOARD (Click and Drill Down)

Customized So that you see answers At-A-Glance
 Graphs Already Made to Display Your Information
 Fully Interactive Graphs and Tables
 Single Click to Change Date Range, Location, Profession
 View by the Threshold Scores You Set

DOES THE HARD WORK

Collects Data From Multiple Sites
 Cleans Data So You Only Look At What is Relevant
 Identifies and Corrects Name Variations
 Includes Keeping Track of When Renewals are Due

FRIENDLY

Uses Your Labels in Charts
 Reminders Print a list of those who need to update their skills
 Reports Structures are Already Pre-done
 Keeps Settings Once You Set Thresholds, Data Ranges and Other Information
 Skills can be performed on any manikin in the system

ADMINISTRATIVE CONTROL

Add Users Whenever You Want
 Manage Employee Changes Such as Transfers and New Employees
 Track Who Has Completed and Who Has Yet to Complete Skills

QUICK GLANCE GRAPHS

Show How Much Scores Have Improved Over Benchmarks
 Show If Scores Reached the Threshold You Set
 Show How Many Need Improve to Attain Threshold

SCALABLE

Add Sites at Any Time
 Integrate Into Your Existing Data.
 Add Customized Reports When Desired



VP eSERT01 Add to New Manikin Order
VP eSERT02 Start eSERT (no manikin)
VP eSERT03 Add to Existing eSERT Installation