

SmartMan Arms and Legs

Add-On Option

The arms and legs can be attached to the SmartMan BLS, ALS, and Megacode torso manikins

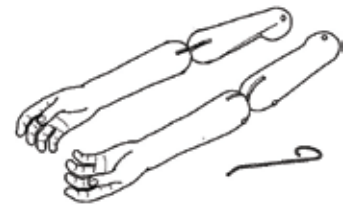
Features

Light weight arms clip through hooks in the shoulders. Light weight have bendable knees and rotatable legs. Easily assembled with the SmartMan Adult manikins. Simply pull the black waist piece into the correct guide position at the waist of the manikin. Secure in place with the attached velcro straps.

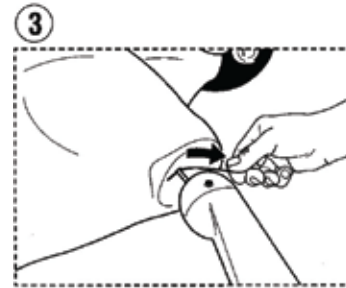
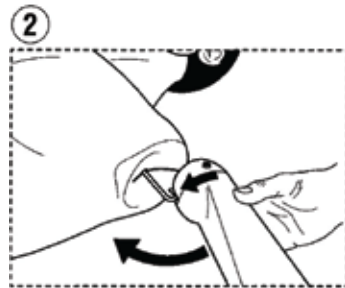
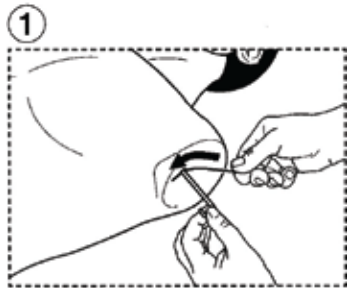


Packing

The arms and legs come in a grey carry bag. They are light to carry and it also acts as a storage case. The arms and legs can be left attached to the torso manikin or can be easily detached.



Attaching the arms



Note

If you purchased the IV Trainer Arm, the right arm must be removed to fit the IV Trainer Arm.