

**SKU: SMT AM2**

# Airway Management Simulator + Ventilation Control

**Ideal Simulator For Thoroughly Learning Airway Management**

*Advanced Realistic Anatomical Landmarks*

**Includes Every Feature in AM1 as well**



*Excellent Best Practice for Insertion  
of Advanced Airway Devices*

*Realistic Training for Placement of  
Nasopharyngeal Airway and  
Nasotracheal Airway*

*Direct Laryngoscopy with Endotracheal  
Tube Insertion*

## Advanced Look and Feel

*Anatomically Correct Landmarks*

*Immediate Real Time Feedback for Precision*

*Timing to Establish a Patent Airway*

*Feedback on Cuff Placement and Leakage*

*Switch to Intubation During Procedure*

## Activities for Ventilations Mastery

*Perfect Your Control of Normal Rate of Breathing*

*Practice Reduced Volume During Respiratory Distress*

*Timing to Switch from Non-Invasive to Placing of  
an advanced airway device*

*Control Volume and Rate While  
Changing on the Fly*



**SKU: SMT AM2**

16155 Sierra Lakes Parkway  
Suite 160210, Fontana, CA USA 92336  
Tel: +1 877 774-4323

[www.SmartMan.biz](http://www.SmartMan.biz)

**S<sup>®</sup> SmartMan**  
MORE SURVIVORS

### ONLY ON SMARTMAN AIRWAY MANAGEMENT

*Real Time Feedback for When Timing and Accurate Precise Control of Ventilations are needed*

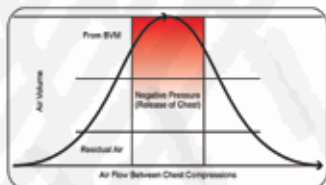
#### CAN YOU ...?



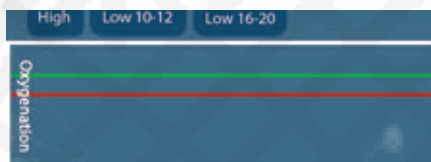
... Switch from NIV to Invasive Airway on the fly? How long does it take you?



... Properly Provide for Release of Peak Pressure?



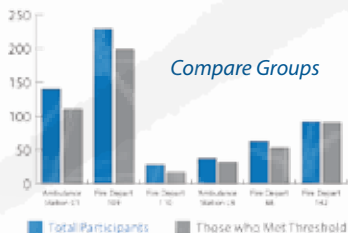
... Reduce Pressure to the Capillaries by Switching to a Lower Volume Ventilation for a Patient in Respiratory Arrest



... Seamlessly Control the Inhalation and Exhalation?

... Objective Evidence that Skills have been Mastered  
... Examine Group Performance and Change Over Time  
... Show Individuals are Consistently Achieving the Target Level

#### OBJECTIVE AIRWAY MANAGEMENT DATA AT YOUR FINGER TIPS



Compare Groups Over Time

Individuals' Performances at a Glance



For NP capability see SMT AM2

### BASIC, INTERMEDIATE, ADVANCED AIR & AIRWAY MANAGEMENT

### NON-INVASIVE AND INVASIVE SKILLS PRACTICE AS WELL AS REAL LIFE VENTILATING ACTIVITIES WITH REAL TIME FEEDBACK

#### NON-INVASIVE / INVASIVE

For improving use of the BVM and correct delivery of positive pressure ventilations. Physical and digital feedback as you practice.

Also designed for learning correct placing of an ET Tube and other Extraglottic Airway Devices. It provides the correct physical landmarks and gives immediate accurate digital

Also includes the basics of proper techniques by requiring head tilt-chin lift, physical and digital feedback to learn to avoid insufflation, verifying placement.

#### WITH THORAX

- Life-Like Feel of Interactive Air Movement
- Natural Chest Resistance for Inhalation & Exhalation
- Required for Placing of Tube on when Chest moving
- Realistic Pressure Gradient for Air Movement

#### PHYSICAL LIKENESS

Excellent Physical Look and Feel:  
Mouth; Teeth; Tongue; Pharynx; Larynx; Epiglottis;  
Vocal Cords; Trachea; Esophagus, Esophageal  
Sphincter; Lungs

#### ACCURATE DATA

- Accurate Reporting of Information on "Patient Crucial Parameters" Allows for Evidence Based Debriefing
- Allows For Self Assessment and Self-Improvement During A Training Session
- Immediate Create a Report for Student/Instructor or Print Later

#### UNIQUE ADVANCED SKILLS ALL WITH REAL TIME FEEDBACK

- Switch on the fly from non-invasive airway procedures to invasive airway in order to maintain optimal patent airway
- Timing to Successfully Place an Advance Airway and Assess Leakage
- Feedback to Perfect Maintaining Low Volume Delivery will Varying the Rate
- Control Volume and Rate Delivery for When Low Volume Ventilating is Required.
- Visualization to Prevent Excessive Peak Pressure
- Natural Increasing Resistance As Volume Increases

*Nasopharyngeal (NP) Airway*  
*Nasotracheal (NT) Airway*  
*Anatomical landmarks for Visual Accuracy*  
*Extremely Durable Airway Material*  
*Create Tongue Edema*  
*Full Range of Supraglottic Device Insertion*  
*Direct Laryngoscopy with ET Tube Insertion*  
*Lifelike Feel With Natural Chest Resistance*

#### REAL TIME FEEDBACK

- Accurate Digital Feedback on Rate of Air Flow, Volume, Tidal Flow, Interval, Time to Place Advanced Airway
- Timing for Placement of ET Tube When Performed as a Practice By Itself or When Performed in Transition from Non-Invasive Airway Procedures.
- Full Volume and Low Volume Training As Well As Verification of Whether the Cuff is Leaking, timing Between Ventilations
- Training to Properly Release the BVM
- Display and Recording of Accurate Volume, and Accurate Rate of Air Flow